

SkyWeb & SkyWeb Mobile



FLIGHT FOLLOWING

- View aircraft position, flight path and detailed flight information in Google and Microsoft maps
- Access historical data
- Communicate with the aircraft via embedded messaging program
- Calculate distance to destination
- View aviation weather overlays
- Set geofence flight restrictions and flight watch corridors
- Calculate ETA based on GPS speed

MANAGEMENT & ADMINISTRATION

- Activate, configure and manage assets remotely
- Create secure SkyWeb accounts and assign part or all of a fleet to each account
- Assign various access levels to authorized parties
- Analyze historical billing information plus current trend of data and voice usage
- Configure email notification list for significant events
- Send remote emergency notifications to any cell phone
- Configure quick messages and address book entries
- Forward data to government and other contract entities (AFF)

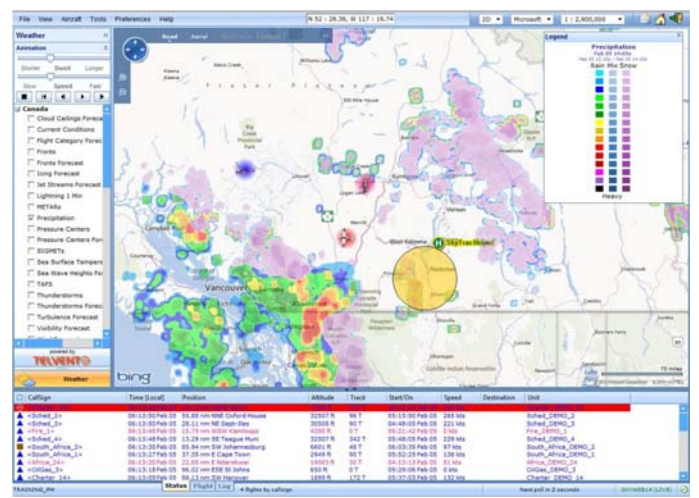
REPORTS

- Generate reports on air time or flight time for selected time periods and assets
- Generate reports on system usage

SKYWEB MOBILE

- Monitor the fleet from your BlackBerry, iPhone, iPad or Android
- Communicate with the aircraft via email or phone call directly from the program

SkyWeb is a web-based mapping and system management program. Designed and maintained by the SkyTrac team of in-house software engineers, SkyWeb has a user-friendly and intuitive interface that can be accessed from anywhere in the world, anytime of day. This allows clients the ability to monitor their fleets, configure their equipment and accounts and run flight reports on their schedule, regardless of the time zone they operate in.



SKYWEB & SKYWEB MOBILE

SKYWEB

File View Aircraft Tools Preferences Help S 3 : 5.31, E 37 : 25.45 3D Google 1 : 36,000

Weather

Google earth

Time (Local)	Latitude	Longitude	Position	Altitude	Track	Speed	Event	Extra
10:02:32 Feb 14 - 11:54:41 Feb 14			[29]	3.37 nm NE Ndarakwai → 22.8 nm E Ndarakwai				
11:54:41 Feb 14	S 3 : 4.12	E 37 : 21.95	22.0 nm E Ndarakwai	19003 ft	30 T	65 kts		
11:50:41 Feb 14	S 3 : 3.96	E 37 : 21.95	22.79 nm E Ndarakwai	19003 ft	30 T	70 kts		
11:46:41 Feb 14	S 3 : 3.73	E 37 : 21.87	22.71 nm E Ndarakwai	18504 ft	30 T	76 kts		
11:42:40 Feb 14	S 3 : 0.89	E 37 : 21.05	21.16 nm S Oltukai	18504 ft	190 T	81 kts		
11:38:40 Feb 14	S 3 : 2.92	E 37 : 21.65	22.49 nm E Ndarakwai	18504 ft	190 T	81 kts		

Assets

TRAINING_PH

Status Flight Log

1 Flight by callign

Next poll in 2 seconds

SKYWEB13 (LIVE)

SKYWEB MOBILE

No Service 11:25 AM

SKYTRAC
YOUR SATCOM TECHNOLOGY PARTNER
SkyWeb Mobile 1.0.11

apidemo4

Remember Me

Login

Help

No Service 11:26 AM

Aircraft List

<STS-AP>, 21 Jan 11:25:31
3848 ft, 221 kts, 163.07 nm from
SE Banzhau,India

Aircraft Log

Map-Follow Me

Map-Route

Send Email

Call Aircraft

Cancel

ROGERS 11:44 AM 52%

Aircraft List Map-Route

Phnom Penh

Log Map Standard

No Service 11:24 AM

Aircraft List

- <Africa_24>, 21 Jan 11:20:02
12499 ft, 78 kts, 19.20 nm from
S Oltukai,Kenya
- <Asia_2>, 21 Jan 11:23:10
4898 ft, 76 kts, 178.74 nm from
WSW Hanoi,Vietnam
- <Fire_1>, 21 Jan 11:22:13
1948 ft, 0 kts, 0.88 nm from
NNW Kamloops,British Columbia
- <Fire_2>, 21 Jan 11:23:08
948 ft, 30 kts, 69.23 nm from
NW Sydney Intl,Australia
- <STS-AP>, 21 Jan 11:23:58
3799 ft, 238 kts, 153.55 nm from
SE Bombay,India
- ISAT_TEST2, 21 Jan 11:22:09
1049 ft, 140 kts, 272.78 nm from
SW Brazzaville,Congo
- <Asia_1>, 21 Jan 10:37:58
0 ft, 0 kts, 118.55 nm from
WNW Saigon,Vietnam